

# Volcano Stamp Quiz

1. How many countries have featured Mt Fuji on a volcano stamp? Nearest guess wins, between 1 and 200.

**105 countries**, from all corners of the globe **(Image 10) and (Image 11)**

There are 850 individual Fuji stamps issued up to 2020, including several featuring Mickey Mouse and a few with Mt Fuji in the far distance, measuring only 1mm high on the stamp.

2. How many active volcanoes are there on Earth, that are expected to blow up in coming years? Is it 70, 500, 1000 or 10,000?

**Roughly 1000**

3. How many volcanoes physically erupted in the world in 2021 (not including those that are just smoking away)? Is it 25, 70, 210 or 1000?

**70**

4. Which country has issued the most volcano stamps ever? Is it Nicaragua, Indonesia, Japan or New Zealand?

**Nicaragua**

They have issued 1,018 volcano stamps, which is 20% of their total stamps ever issued. Nicaragua has 19 active volcanoes along its west coast, they are part of the Pacific Ring of Fire.

5. Which volcano buried the Roman city of Pompeii in A.D. 79? Bonus point for guessing how many volcano stamps feature Pompeii.

**Vesuvius. (Image 06) and (Image 16)**

It was dormant for almost 2000 years until it destroyed Pompeii. Nowadays, Naples sits at its base, with 3 million people. It's not a case of if it blows again but when. Bigger eruptions than Pompeii are visible in the rock record, and would destroy Naples.

**40 stamps feature Pompeii** from 8 countries (Ajman, Chad, Guinea Bissau, Italy, Mali, Mozambique, Russia and Sierra Leone).

6. How many volcano stamps have ever been released in the world? 400, 4000, 14000 or 40000?

**14,000**

7. Which country has issued the most stamps without ever issuing a volcano stamp? Hint, it ran a trading company and colony for 350 years in a country that has the most active volcanoes in the world (76).

**Netherlands**

It occupied or ran the Dutch East Indies, now called Indonesia, from 1595 to 1945. It has issued over 4000 stamps, but no volcanoes!

8. On what planet is the highest and biggest volcano in the solar system? Bonus points if you guess its height within the nearest 3km.

**Mars (Image 08)**

It's called Olympus Mons. It is 625km in diameter and **25km high**, and has 100 times the volume of the biggest volcano on Earth, in Hawaii.

4 countries have issued stamps showing Olympus Mons – Grenada, Palau, Sierra Leone and Togo.

9. Can volcanoes on Mars blow lava onto Earth? Yes or No.

**Yes!**

Meteorites have been found in Antarctica made from basalt rock. They have the same chemical signature as lava from Mars. Volcanologists believe Olympus Mons eruptions are powerful enough to launch lava bombs out of Mars' weak gravity into space. Some end up crashing into Earth!

10. What country released the first ever volcano stamp? Bonus point for guessing the decade (hint, it's in the 1800s).

**Nicaragua. In 1862. (Image 12)**

It features the 'five volcanoes of federation' image which was used on a further 615 Nicaraguan stamps, primarily between 1862 and 1929.

11. How long ago was the last volcano eruption on the Australian mainland? 5,000 years ago? 40,000 years ago? 1 million years ago? 20 million years ago?

Get bonus points if you can name the state it is in, and the name of the volcano

**5,000 years ago. Mt Schank, South Australia**

The eruption of Mt Schank is recorded in oral history stories of the Boandik aboriginal people. It does not have its own volcano stamp. Big Ben volcano is still active on Mt Heard, an Australian island about 4,000 kilometres south-west of Perth.

12. Afghanistan, Bangladesh, Angola and Barbados have no volcanoes, but all have released volcano stamps. What is the common theme?

**All have released stamps with Mt Fuji on them. (Image 03)**

Fun Fact: The glue on the back of stamps is vegan! And if you lick a stamp it is about 1/10th of a calorie.
---

13. In the recent Australian Volcano Stamps series, what error caused local uproar (and international reporting) on the Mt Warning stamp?

**It doesn't feature Mt Warning! (Image 04)**

It features 'Doughboy' a remnant volcanic pipe nearby. But luckily it has the peak of Mt Warning in the far top right corner of the stamp.

14. Which Pacific Island country has a post office box perched on the edge of a live volcano crater?

**Vanuatu. (Image 05)**

There is a post office box on Yasur volcano on Tanna Island. It is regularly destroyed by ejected lava bombs.

15. What aviation disaster happened at Mt Erebus volcano in Antarctica in 1979? **(Image 14)**

**A sightseeing flight from New Zealand plunged into the side of the volcano killing all 257 people onboard.** The flight coordinates had been accidentally modified and despite good visibility, there was no visual distinction between the snow-covered volcano and distant clouds. The plane smashed straight into the side of it at 450m above sea level (the volcano is 3,800m high).

16. Which of these famous people features on volcano stamps? Marilyn Munroe, Nelson Mandela, Queen Elizabeth or Glenn Marshall.

**A: All of them! (Image 01) and (Image 13)**

All have shamelessly pushed their profiles by weasling their way onto a volcano stamp.

17. In the past 250 years, which single volcanic eruption killed the most people? Hint, it is in Indonesia.

**A: Tambora volcano,** on Sumbawa island (east of Bali). **(Image 07) and (Image 09)**

It unleashed a massive eruption in 1815, creating ash flows and a tsunami that killed 10,000 local people. Then ash spread all round the world and caused the 'Year without a summer' in Europe in 1816. It led to famines that killed another 80,000 people. Mary Shelley wrote Frankenstein that year while hunkered down in the gloom of Switzerland's summer.

ENDS

Print double sided.

Print enough copies of "Match the Stamps to the Questions" for all participants.

# Match the Stamps to the Questions



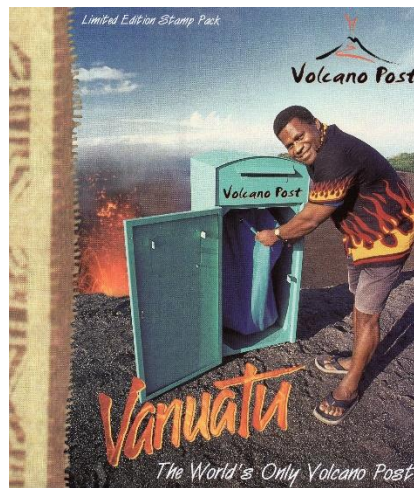
Question: *Image 01*



Question: *Image 03*



Question: *Image 04*



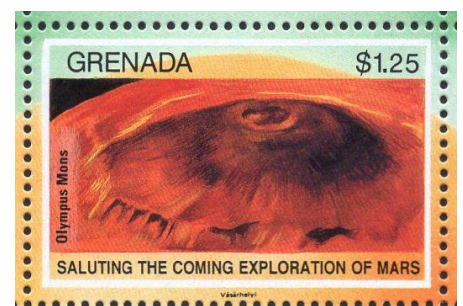
Question: *Image 05*



Question: *Image 06*



Question: *Image 07*



Question: *Image 08*



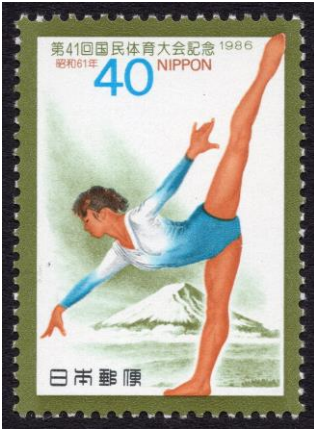
Question:

Image 09



Question:

Image 10



Question:

Image 11



Question:

Image 12



Question:

Image 13



Question:

Image 14



Question:

Image 16